

# PLANETARY NEWS



April 2011    Volume 7    Number 4

## 2011 Late Winter Seminar

Saturday, March 19, 2011 brought out a number

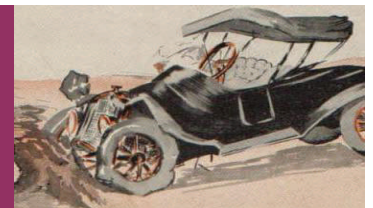


of Greater Milwaukee Model T'ers. Many of us have been hibernating and were starved for Model T knowledge. Fortunately, we all had the opportunity to attend a Late Winter Seminar at Bob Wirth's garage, to satisfy our appetite. Tod Wirth presented an excellent talk about the workings of the Model T transmission. Tod used three examples to aide his discussion on the Model T transmission. One of Tod's daughters had some trouble with her modern iron transmission and it donated a planetary gear set for illustration. Although this gear set

had some chipped teeth and its rotation was rough, it served as a good example of how the gear set works. Tod also made a plastic gear model of a planetary gear set which helped show how a speed reduction and direction reversal occurs. We all learned that the Model T transmission is not a traditional planetary gear set, but a variation. A full sized Model T engine/transmission completed the excellent presentation and I'm sure we all have a better understanding of how this mystery beneath the floor boards occurs. Later in the afternoon we all had a chance to work on our ignition coils. There were two HCCT devices (Go to Page 8)

## Your Link to the Gears

### *Bands part 8*



**1]**— **2011 Late Winter Seminar** --- Transmission explanation and coil testing

**5]**— **Model T Coach House** — Installing the engine in the car.

**9]**— **4th July Picnic** — Maynard and Carol to host our annual Picnic

**10]**— **Events** — 4th July parades, come participate in the fun

**14]**— **Blast at Carbide Industries** — May cause a shortage of acetylene

**4]**— **Memory Book Available** — Information on obtaining your copy

**6]**— **I did it, So can you!** — Completing the assembly and adjusting the bands

### **EVERY MONTH**

**2** Board Meeting

**4** President's Message

**12** Book Review

**13** Board of Directors

**16** Committee Chairs

**3** Editor's Message

**12** Calendar of Events

**13** Recipe

**13** Edsul Phord Says