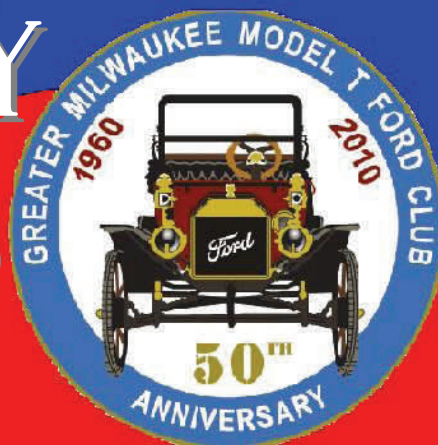




# PLANETARY NEWS



February 2011 Volume 7 Number 2

## Harley Davidson Museum

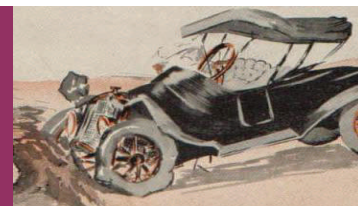


Sunday, January 16th, the Model T Club began its first outing of the year 2011. This was at the Harley Davidson Museum.

Our first tour began at about 1:15 PM with a great group from our Model T Club. Being we had such a big group, we were separated into two groups; one had a tour guide named Diane; the other had a tour guide named Tim. The total number of club members and guests were 27.

We were first taken to the upper level of the museum, whereby we were shown how the Harley Davidson name came to be. We were shown the very first cycles that the company made. Each section we went through showed the birth of the Harley Davidson motorcycles as it came to be – from designs, motors, color selections, to the many ways of life they were introduced to. Since 1915, the company's (

## Your Link to the Gears *Bands part 6*



**1]— Harley Davidson Museum** --- Club visit's the Harley Davidson Museum

**5]— Model T Coach House** — Clutch installed on Mike's transmission.

**10]— Kranz Tour** — Day 4, Mark & Marge take a cool September Wisconsin Tour

**14]— Dairyland Tin Lizzie** — Model T University, A very informative and fun seminar.

**4]— President's Message** — 2011 is underway, early events will be a blast!

**6]— I did it, So can you!** — Bands, your link

### **EVERY MONTH**

**2** Board Meeting

**4** Get Well

**13** Recipe

**13** Edsul Phord Says

**3** Editor's Message

**12** Calendar of Events

**13** Board of Directors

**16** Committee Chairs