

PLANETARY NEWS

January 2011 Volume 7 Number 1



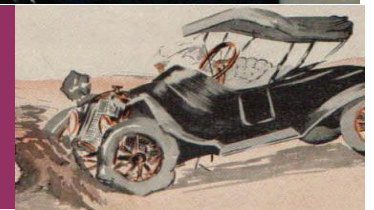
Greater Milwaukee Model T Ford Club mourns the passing of Mike McOlash

Mike McOlash, long time member of The Milwaukee Model T Ford Club passed away on December 6, 2010. Mike was been a member of the Model T Ford Club since 1982 where he has made and fostered many friendships. The Wauwatosa Fourth of July parade will not be the same without Mike and his 1923 Touring car leading the way. The Clubs Board Meetings will surely miss his presence and contributions to the clubs activities and direction. Mike was a board member and recently, the clubs Treasurer.

Mike spent his childhood in Door County, Wisconsin where he developed a love for nature. He enjoyed hiking and logged many miles in the Sabeno Canyon and Grand Canyon of Arizona. In early life, Mike enjoyed sports. He was a competitive runner for Gibraltar High School, where he set (Go to Page 8)



Your Link to the Gears *Bands part 5*



- | | |
|--|---|
| 1] — Mike McOlash --- Club mourns the passing of long time member and Treasurer. | 4] — President's Message — 2011, Happy New Year |
| 5] — Model T Coach House — John begins disassemble of his TT engine. | 6] — I did it, So can you! — Bands, your link to the gears. |
| 10] — Kranz Tour — Day 3, Mark & Marge take a cool September Wisconsin Tour | |
| 14] — Winter Events — Harley Davidson Museum & Dairyland University | |

EVERY MONTH

- | | |
|-----------------------|---------------------|
| 2 Board Meeting | 3 Editor's Message |
| 12 Calendar of Events | 13 Recipe |
| 13 Board of Directors | 13 Edsul Phord Says |